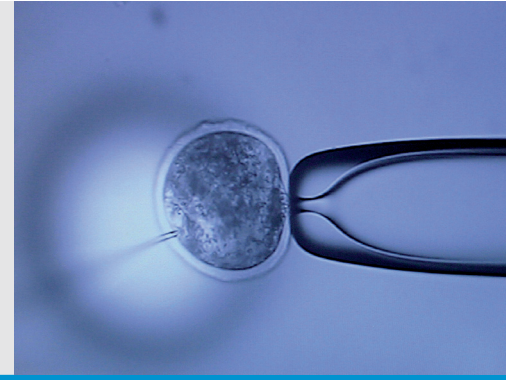




# EMBRYO AND OOCYTE TRANSPORT



## Embryo Transport Kit

Carrying case with portable incubator, dry battery and battery charger - enabling a safe transport over long distances with an optimum environment for the embryo.

### Your benefits

- Allows shipping of embryos with courier service, hand carry onto train or airplane, transport in a car and stationary maintenance under optimum conditions of incubation
- Constant temperature by very accurate controlling systems
- Long lasting rechargeable battery, up to 20 h
- Hygienic environment
- Heavy-duty, lockable and shock proof carrying case ensures a safe transport
- Versatile power supply: 12V DC car battery (cigarette lighter adapter), 230V or 110V outlet, wireless with battery

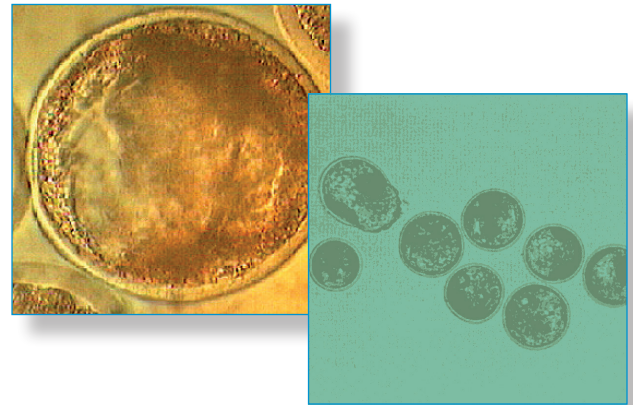
### Technical specifications

- Outer dimensions: 584 x 267 x 289 mm (L x W x H)
- Capacity of battery: 20h at >20°C
- Weight of complete kit: 11,5 kg

*(Technical specifications of incubator REF. 19180/0001, see reverse page)*

**Embryo transport case with incubator and battery**

**REF. : 19180/2101**



*The Incubator REF. 19180/0001 is included in the Embryo Transport Kit*



## Portable Incubators

Provides a safe transport under constant and optimum conditions for oocytes and embryos.

### Your benefits

- Metal beads ensure a constant and equal distribution of temperature
- Safe and easy fixation of straws and vials during the transport
- Metal beads are sterilizable and create an absolutely dry and hygienic environment
- Rechargeable battery enables transport over longer distances

### Technical specifications

- Temperature precision:  $\pm 0.5^{\circ}\text{C}$
- Electronic temperature control
- Power supply: 12V DC (car battery with cigarette lighter adapter) or rechargeable dry battery

**Portable Incubator**, preset temperature  $+37^{\circ}\text{C}$ , other temperature settings upon demand

REF. : [19180/0001](#)

**Portable Incubator**, with digital temperature display, freely selectable temperature setting (up to  $+55^{\circ}\text{C}$ )

REF. : [19180/0002](#)

### Accessories

suitable for both incubators

**Rechargeable dry battery**, 12V / 10Ah, capacity at  $+25^{\circ}\text{C}$ : approx. 12 h

REF. : [19180/1210](#)

**Charger for battery**

REF. : [19180/1200](#)

**Power supply unit**

for portable incubator, 230V

REF. : [17165/1395](#)



19180/0001



19180/0002